

SALES EVALUATION REPORT



Rosmech Unit ID No.	8155	Machine Inspection Date:	18-January-2012
Inspector:	Roger Howe		
Machine Description:	Scarab Merlin on a Nissan UD MK240		
Chassis Model:	Nissan UD MK 240		
Vin No:	JNBMKB21500E00638		
Engine No:	FE6302693F	Aux. Engine No.	N/A
Sweeper Serial No:	5046	Year of Manufacturer:	Oct-04
Tare Weight:	6400kg	Gross Weight:	10400kg
Odometer:	114,699	Engine Hour Meter:	8,204
Sweep Kilometres	85,500	Sweeper Hour Meter:	4,498

MACHINE FEATURES

N/A

All Used Sweepers offered for sale and sold by Rosmech Sales & Service Pty Ltd are under the conditions of "As Is, Where Is, No Warranty or Guarantee Supplied, Implied or Offered what so-ever".

SWEEPER INFORMATION

Style of Sweeper:	Vacuum Broom Dual Steer Super Sweep		
Model:	Merlin Version 1 Canbus		
Auxilliary Motor:	Make: Not Applicable	Model:	N/A
Hopper Features:	Stainless Steel Yes	Rubber Lined	No
	Screen Shaker No	Screen Chains	No
	Hopper Vibrator Yes	Hopper Prop	Manual

CHASSIS INFORMATION

Engine:	Model	Nissan Diesel FE6TB-31	
Transmission:	Model	Manual	
Body:			
	Head Lights Working	Left Yes	Right Yes
	Tail Lights Working	Left Yes	Right Yes
	Indicator Working	Left Yes	Right Yes
	Horn Working	Yes	
Steer Control:	Dual Steer		
Cabin:	Cabin Tilt	Manual	
	Air Conditioner	Installed Yes	Operational Yes
	Radio	Installed Yes	Operational Yes
	CD	Installed Yes	Operational Yes
	Windows	Electric & Tinted	Mirrors Electric
	Type of Seats	Air Suspension	

MACHINE OPTIONS & ACCESSORIES

Boom	Rear Mounted Air Assisted		
LOW PRESSURE WATER SYSTEM:			
Front Spray Bar	Yes	Spigot Water	Left Hand & Right Hand Sides
Additional Spray Bar Behind Nozzle	N/A		
Detergent Dispenser	Yes	Wash Out Hose	Yes

All Used Sweepers offered for sale and sold by Rosmech Sales & Service Pty Ltd are under the conditions of "As Is, Where Is, No Warranty or Guarantee Supplied, Implied or Offered what so-ever".

MACHINE OPTIONS & ACCESSORIES, Continue

HIGH PRESSURE WATER SYSTEM:

Front Spray Bar **Wide Sweep Broom**

Additional Spray Bar Behind Nozzle

Fan Wash **Hand Lance**

AIR SUCTION SYSTEM:

Suction Nozzle

Intake Tube

Spigot Tube

Deflector

Gutter Broom Tilt

Gutter Broom Down Pressure

Wide Sweep / Bottom Broom **Wide Sweep Pressure**

Coning

CCTV **Model**

Camera Locations

L.E.D. Light Bar **Arrow Board**

Number of Rotating Beacons **Front Cab** **Rear Hopper**

Weed Spray

Auto Greasing

Sunvisor **Weather Shield** **Window Tinting** **Broom Holder**

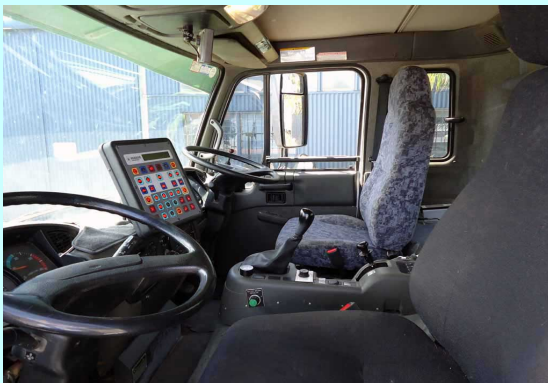
Orange Cone Holder **Tow Bar** **Two-Way** **Tool Box**

Soap Dispenser **Hand Wash** **Fire Extinguisher**

Inspector Signature:

All Used Sweepers offered for sale and sold by Rosmech Sales & Service Pty Ltd are under the conditions of "As Is, Where Is, No Warranty or Guarantee Supplied, Implied or Offered what so-ever".

ADDITIONAL PHOTOS



All Used Sweepers offered for sale and sold by Rosmech Sales & Service Pty Ltd are under the conditions of "As Is, Where Is, No Warranty or Guarantee Supplied, Implied or Offered what so-ever".